

Magic Switch

User Manual

for Mac & Windows

Mac to Mac / Mac to Windows / Windows to Windows /

Windows/Mac to iPad

Windows/Mac to Android

TABLE OF CONTENTS

INTRODUCTION	2
FEATURES	2
SYSTEM REQUIREMENTS	2
REGULATORY COMPLIANCE	3
PACKAGE CONTENTS	3
FUNCTION LIST	3
GETTING STARTED-MAC.....	4
GETTING STARTED-WINDOWS	5
FUNCTION INSTRUCTIONS	7
Keyboard and Mouse Sharing	7
Clipboard Sharing	8
File Transferring.....	8
Keyboard sharing for iPad	9
SETTING INSTRUCTIONS	9
Magic Switch Utility Icon function.....	9
Preferences Setup	11

INTRODUCTION

Thank you for purchasing the **Magic Switch**! This amazing device gives you the capability to “Drag & Drop” and “Copy & Paste” to quickly transfer data, text, pictures, music, videos or other files between Windows & MAC OS computers.

This **Magic Switch** lets you share the keyboard and mouse with another computer and also supports multi-display environments. Why type on the tablet when you can access the full sized keyboard and mouse? Simply plug the **Magic Switch** and switch the mouse cursor to the computer screen you want to work on. In addition, this pocket-sized cable allows you to have this powerful functionality anywhere.

FEATURES

- ✧ No installation CD is required, simply Plug-and-Play
- ✧ Drag & Drop to transfer your data, photos, music, and videos between two computers
- ✧ Supports the keyboard function for iPad with Apple USB connection kit
- ✧ Supports the keyboard and mouse function for Android tablet
- ✧ Multi-display is supported between two connected computers with different operating systems
- ✧ Conforms to USB 1.1 for Keyboard/Mouse functions
- ✧ Conforms to High-speed USB 2.0 (480Mb/S) transfer rate

SYSTEM REQUIREMENTS

Windows

- OS: Windows 7 / Vista / XP / 2000
- Available USB 2.0 port
- CPU: Intel Pentium II processor
- RAM: 512MB RAM or higher

Mac

- Mac OS X v10.6 / v10.7
- Available USB 2.0 port

iPad / iPad2

- Apple USB interface connection kit is required

Android

- OS: 3.1 / 3.2
- Available USB 2.0 port
- Supports USB Keyboard, mouse and storage

REGULATORY COMPLIANCE

FCC/CE/C-tick/VCCI

PACKAGE CONTENTS

- ◇ Magic Switch
- ◇ User Manual

FUNCTION LIST

Function Behavior for OS	<ul style="list-style-type: none"> ▪ Windows to Windows ▪ Mac to MAC ▪ Windows to MAC 	<ul style="list-style-type: none"> ▪ Windows to iPad ▪ Mac to iPad 	<ul style="list-style-type: none"> ▪ Windows to Android ▪ Mac to Android
Keyboard & Mouse Control Switching			
Use the mouse to move off the edge of the screen	Yes	X	X
Use mouse middle button to switch	Yes	X	Yes
Use hotkey toggle [Alt+S] to switch	Yes	Yes	Yes
Keyboard sharing	Yes	Yes	Yes
Clipboard Sharing			
Text Share	Yes	X	X
Picture Share	Yes	X	X
Data Transfer			
Drag and Drop	Yes	X	X

GETTING STARTED-MAC

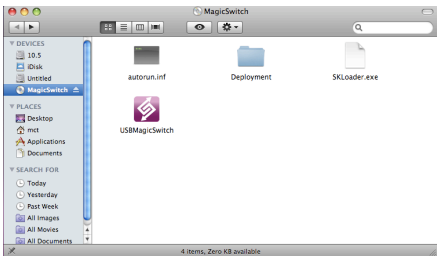
Follow the steps below to start the application:

1. Connect one end of the **Magic Switch** to a USB port on one of the two computers. And connect the other end of the **Magic Switch** to a USB port on the second computer. (Please see the pictures below)

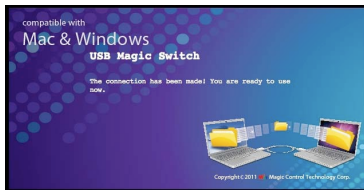


2. When you initially connect the **Magic Switch** to the MAC computer, a window will pop up that says "Keyboard Setup Assistant". Simply close the window and re-plug the **Magic Switch**.

3. Click the **Magic Switch** CDROM icon  on the desktop or on the "Macintosh HD". Double click on the **Magic Switch**  icon.



4. When the **Magic Switch** is connected properly, the launch page will be shown.



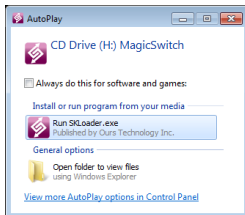
GETTING STARTED-WINDOWS

Follow the steps below to start the application:

1. Connect one end of the **Magic Switch** to a USB port on one of the two computers. And connect the other end of the **Magic Switch** to a USB port on the second computer. (Please see the pictures below)




2. The device will automatically start the **Magic Switch** software installation on both computers. Or an **"AutoPlay"** option window may appear. Please click on the option **"Run SKLoader.exe"**

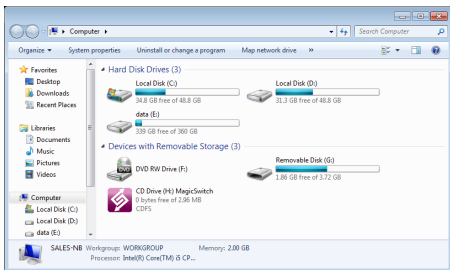


TROUBLESHOOTING:

If auto-run is not launched, please follow the steps:

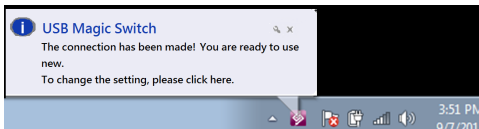
Insure both computers are properly connected to the USB cable.

Go to **My Computer** and double-click the **Magic Switch** icon () to start the application.



If the **“User Account Control”** window appears on the screen, Click **“Yes”** to continue.

When the **Magic Switch** is connected properly, you will see pop-up balloon shows **“The connection has been made”**.



FUNCTION INSTRUCTIONS

Let's explore some function and features!

You can start playing with your **Magic Switch** and enjoying the convenience it brings you.

Keyboard and Mouse Sharing

- **"Move your mouse cursor"** between two computers naturally and seamlessly. Set correct side of the other computer in "Preference".
- Press **"Alt+S"** to switch cursor. **Note: Please use this method on Android Tablet.**



- **Switch the Keyboard usage** to another computer. Use the keyboard of the first computer to type the text on the file of the second computer.



Note: Please use a Mouse and Keyboard set. Because the Keyboard Switch function always follows the mouse cursor of the same computer.

Icon  : When the keyboard & mouse is under controlled by other computer.

Clipboard Sharing

- “**Copy**” the selected content (text or pictures) of 1st computer and “**Paste**” it on 2nd computer.



Icon : When receiving clipboard data from another computer.

File Transferring

- “**Drag & Drop**” the file or folder to the other computer.



- “**Copy**” the selected file of 1st computer and “**Paste**” it on 2nd computer.
- Use “**Ctrl+C**” to copy the selected file of 1st computer and “**Ctrl+V**” to paste it on 2nd computer.

Note: Please use *the original system hotkey settings* on your computer operating system.

For example:

1. Copy from Mac to Windows: Press the “**Command+ C**” keys on Windows and press “**Control + V**” keys to paste the content onto MAC.
2. Copy from Windows to MAC: Press the “**CTRL+C**” keys on Windows and press “**Command+V**” keys to paste the content onto MAC.

Keyboard sharing for iPad

You can connect a PC and an iPad via the **Magic Switch** and switch the PC's keyboard to work on the iPad.

Due to the lack of a USB port on the iPad, you will need a APPLE "USB connection kit" to connect the **Magic Switch** to other Computer




Please follow the steps below:

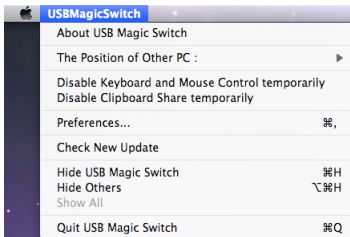
1. Connect **Magic Switch** to "USB connection kit".
2. Connect "USB connection kit" to iPad
3. Press "**Alt+S**" on computer to switch the usage of Keyboard to iPad
4. Touch the screen on the iPad to the location you want to start.
5. Now, you are ready to type on the iPad.

SETTING INSTRUCTIONS

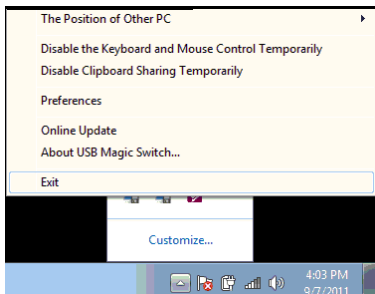
❖ Utility Icon function

To begin set up quickly, please click the **Magic Switch** Utility Icon ().

In MAC OS:



In Windows OS:



About the Magic Switch: Software version Information can be found here.

The Position of Other PC: Set up the position of the other computer by using one of the 4 options (Right/Left/Up/Down)

Disable (Enable) the Keyboard and Mouse Control Temporarily & Disable (Enable) Clipboard Share Temporarily:

Preferences:

For detailed function settings, please refer to “Preference setup”. Your settings will be saved every time you restart your computer.

Check New Update/ Online Update:

Click “Online Update / Online Update”, it will have two scenarios:

- 1) You had latest version. To close the dialogue screen for continue.
- 2) Found new version. Please follow below steps for update:
 - Connected only one side of **Magic Switch** to a computer.
 - Please make sure your network is available.
 - Follow dialogue screen to progress update software.
 - **Do Not** unplug the **Magic Switch** during updating.
 - Re-plug the **Magic Switch** into both computers after update completed.

Note: Please keep updating new version to ensure good performance.

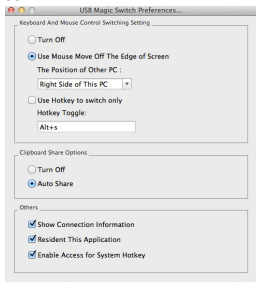
Quit Magic Switch / Exit:

To click “Quit Magic Switch” or “Exit” to uninstall Magic Switch.

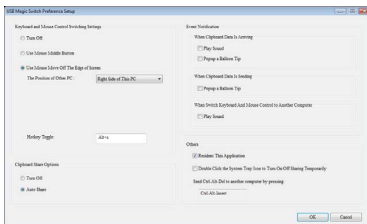
❖ Preferences Setup

Select **Preferences**, the window below will pop up.

In Mac OS



In Windows OS



Keyboard & Mouse Control Switching Settings

○ Turn Off

Disable Keyboard and Mouse Control Switching Sharing.

- **Use Mouse to Move Off the Edge of Screen:**
To switch the control of Keyboard and Mouse from one computer to another, simply move the mouse off the edge of the screen
- **Use Mouse Middle Button:**
Click the middle button of the mouse to switch the keyboard and mouse from one computer to another.
- **Hotkey**
You can setup the hotkey to activate the control switching.
The default hotkey is (Alt+S)


Clipboard Share Options

- **Turn Off**
Disable clipboard sharing.
- **Auto Share**
Enable clipboard sharing.

Event Notification

This option allows you to set the type of notification you receive when Clipboard Data is arriving / sending or when switching the control of the keyboard and mouse to another computer. You can choose to play a sound or to display a pop-up balloon tip.

Others

- **Show Connection Information**
Un-checking to disable the launch page when you start up the device.
- **Resident This Application**
Choose to automatically sets up every time when device is plugged in.
- **Enable Access for System Hotkey**
Choose this setting to activate the Hotkey function.
- **Double Click the System Tray Icon to Turn Sharing On/Off Temporarily**
Enable/disable the clipboard sharing and Keyboard and Mouse control functions by simply double clicking the icon () on the bottom right hand side of the taskbar
- **Send Ctrl-Alt-Del to another computer:**
This option allows for alternative key options for the [Ctrl-Alt-Del] command for the second computer.